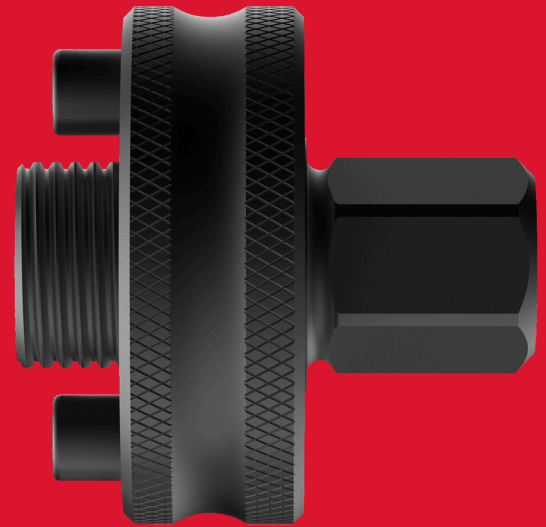




## QL Pin Adaptor XL 5/8"x18 - Ø 32-210 mm - 2PC

SYSTEM ACCESSORIES - HOLESAWS

- Milwaukee QUIK-LOK™ arbor system is a universal fit arbor system for fast holesaw changes. The system is universal therefore fitting all the Milwaukee holesaws plus most competitor brands of holesaws.
- Available in both 9.5mm or 7/16" Hex ( 11mm) shaft to cope with holesaws from 14 - 210mm diameter. The 7/16" arbor is compatible with Quik-Lok™ tools and accessory extensions
- The Quik-Lok™ hole enlargement arbor allows the user to increase the size of an existing hole from 32mm up to 152mm, maximising job applications.
- Quik-Lok™: Saves Time / Increases Productivity / Fully Compatible



Article Number	4932500552
Fits holesaw Ø	Ø 32-210 mm
Holesaw or core reception	5/8" x 18
Pack quantity	2
Shank reception	5/8" x 18