

CLR Plus I

Internally metric threaded connector nut

The connector screw with internal metric thread is used when there is the need to fix metric threaded parts, like for example threaded rods or special accessories for hanging pipes or false ceilings. This item can fix both M8 and M10 studs.

Benefits:

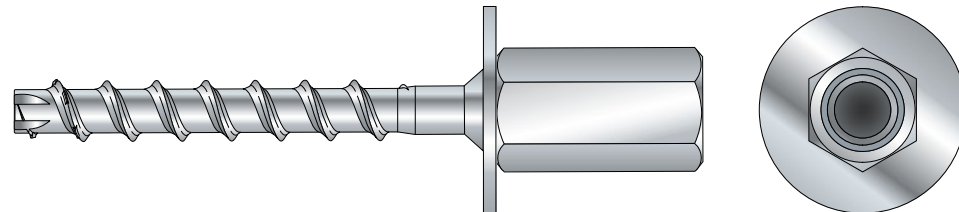
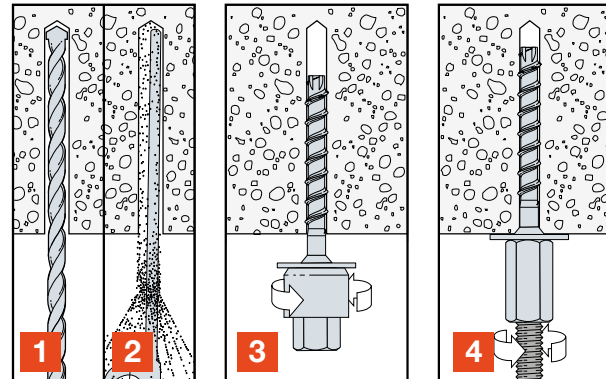
- C1 seismic certification
- Quick method for connecting pipes or false ceilings

Features:

- Metric internal thread M8/M10
- Optimized thread geometry
- Extra cutting thread



Installation:



CLR Plus I - White zinc plated

Code	Dimensions [mm]			Wrench [SW]	Pkg.	Outerbox	Equivalent of the previous article	
	Family name	Type [d x L]	Hole Ø				Code	Type [Ø x L]
	Product reference							
72108B06035	CLR Plus I	6x35 8/10	6	13	50	200	-	-
72108B06055	CLR Plus I	6x55 8/10	6	13	50	200	72008b08055	CLR6-I 7,5x55